

TECHNICAL DATA SHEET

RC-1 BOOST

Soundproofing system

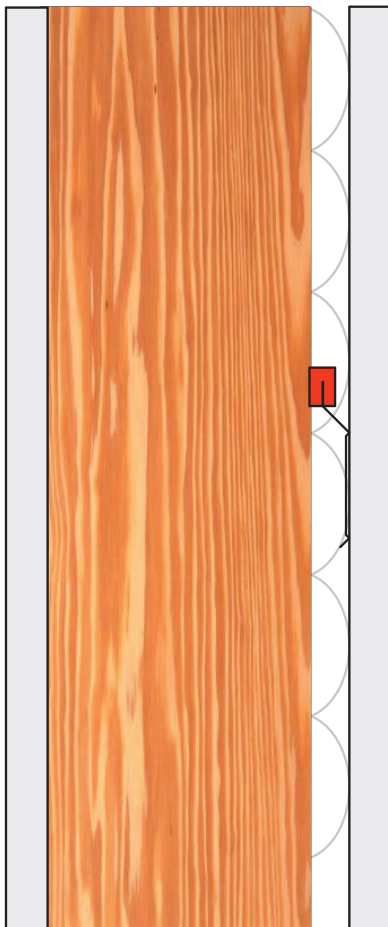


Product Description and Technical Specification

- Wraps around the screw edge of standard RC channel.
- Screwed to the framing using the PAC International supplied RC-1 Boost Screw.
- RC-Boost decouples the gypsum board from the structure stopping STC & IIC vibrations from entering adjacent space.
- RC-1 Boost screw is specifically designed to enhance the acoustical performance of the RC-1 Boost isolator.

The RC-1 Boost is designed for use with any wood or steel application where noise control is required. This includes, wood framed or steel framed wall and ceiling systems. The RC-1 Boost product decouples Generic RC-1 channel from the framing, enhancing the acoustical performance of RC-1 channel's acoustical performance.

With an Acoustical design load rating of 18 lbs. per isolator, the RC-1 Boost clip can support up to two layers of 5/8" gypsum board when spaced no more than 16" x 24" oc. Final span of the RC-Boost isolators is determined by the UL Fire Resistive Design specifications.



RC-1 Boost specifications:

| | |
|-------------------------|--------------|
| Acoustical design load: | Up to 18 Lbs |
| Total deflection | 2 mm |
| Double deflection | Yes (1 mm) |
| Low VOC | Yes |
| Adjustable | No |
| Cavity min | 3/4" |
| Cavity Max | 3/4" |
| Adjustment limit | N/A |
| Use on Ceilings | Yes |
| Use on walls | Yes |
| New Construction | Yes |
| Retro Fit | Yes |
| Assembled In USA | Yes |

| |
|------------------|
| Wood |
| Apartment |
| Commercial |
| Conference Rooms |

| |
|--------------------|
| Condo |
| Recording Studio |
| Home Theater |
| Commercial theater |

2x4 WOOD STUD WALL

Test #: WEAL TL18-171

RC-1 Boost with ClarkDietrich RC-1 Pro



UL File Number: R16638

Airborne Sound



STC 53

OITC 31

CONSTRUCTION: 2x4 Wood Stud Wall

- 1 Layer 5/8" (16mm) Type X Gypsum Board
- ClarkDietrich RC-1 Pro @ 24" o.c. (610mm)
- PAC RC-1 Boost @ 24" x 16" o.c. (610mm x 406mm)
- 2x4 Wood Studs @ 16" o.c. (406mm)
- 3-1/2" (89mm) Fiberglass Batt Insulation
- 1 Layer 5/8" (16mm) Type X Gypsum Board