

## TECHNICAL DATA SHEET

## RC-1 BOOST

Soundproofing system

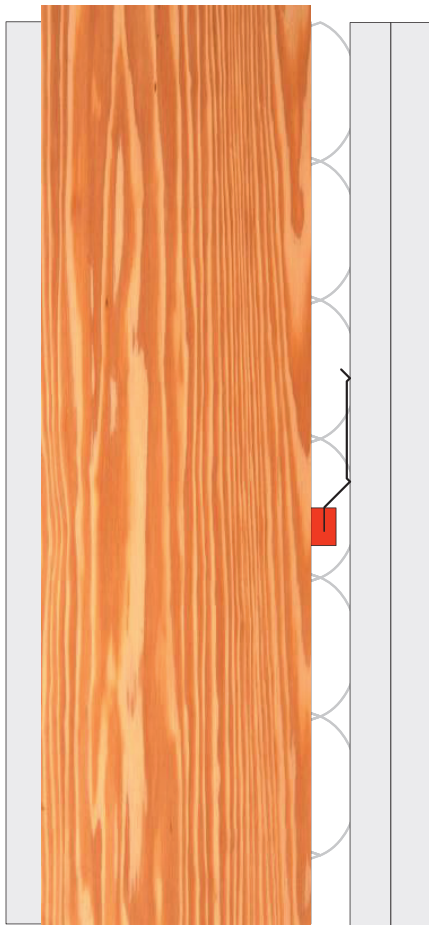


### Product Description and Technical Specification

- Wraps around the screw edge of standard RC channel.
- Screwed to the framing using the PAC International supplied RC-1 Boost Screw.
- RC-Boost decouples the gypsum board from the structure stopping STC & IIC vibrations from entering adjacent space.
- RC-1 Boost screw is specifically designed to enhance the acoustical performance of the RC-1 Boost isolator.

The RC-1 Boost is designed for use with any wood or steel application where noise control is required. This includes, wood framed or steel framed wall and ceiling systems. The RC-1 Boost product decouples Generic RC-1 channel from the framing, enhancing the acoustical performance of RC-1 channel's acoustical performance.

With an Acoustical design load rating of 18 lbs. per isolator, the RC-1 Boost clip can support up to two layers of 5/8" gypsum board when spaced no more than 16" x 24" oc. Final span of the RC-Boost isolators is determined by the UL Fire Resistive Design specifications.



#### RC-1 Boost specifications:

Acoustical design load:	Up to 18 Lbs
Total deflection	2 mm
Double deflection	Yes (1 mm)
Low VOC	Yes
Adjustable	No
Cavity min	3/4"
Cavity Max	3/4"
Adjustment limit	N/A
Use on Ceilings	Yes
Use on walls	Yes
New Construction	Yes
Retro Fit	Yes
Assembled In USA	Yes

Wood
Apartment
Commercial
Conference Rooms

Condo
Recording Studio
Home Theater
Commercial theater

#### WOOD STUD WALL

Test #: NOAL 21-1026

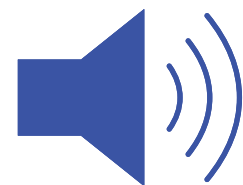
RC-1 Boost with  
ClarkDietrich RC-Deluxe



Coming Soon

UL File Number: R16638

#### Airborne Sound



STC 57

#### CONSTRUCTION: Steel Stud Wall

- 1 Layer 5/8" (16mm) Type X Gypsum Board
- 1 layer of Mute-X in between drywall
- 3-5/8" (92mm) 20eel Studs @ 24" o.c. (610mm)
- 3-1/2" (89mm) Fiberglass Batt Insulation
- PAC RC-1 Boost @ 24" x 24" o.c. (610mm x 610mm)
- ClarkDietrich RC-Deluxe @ 24" o.c. (610mm)
- 2 Layers 5/8" (16mm) Type X Gypsum Board