

TECHNICAL DATA SHEET

RC-1 BOOST

Soundproofing system

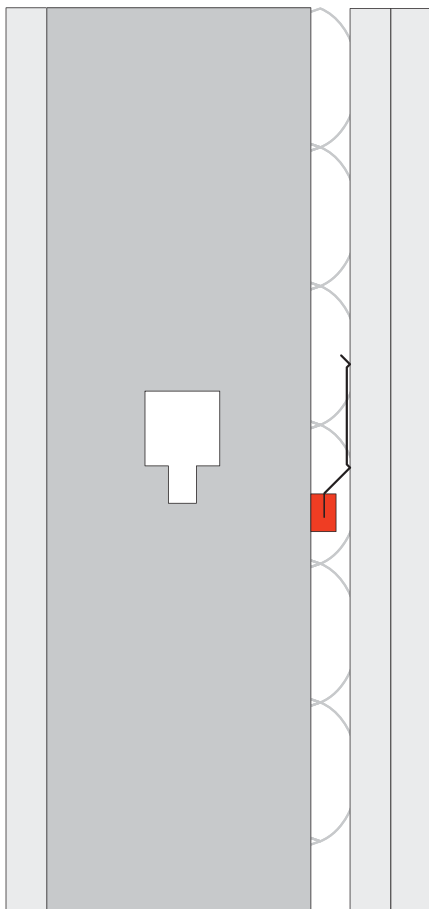


Product Description and Technical Specification

- Wraps around the screw edge of standard RC channel.
- Screwed to the framing using the PAC International supplied RC-1 Boost Screw.
- RC-Boost decouples the gypsum board from the structure stopping STC & IIC vibrations from entering adjacent space.
- RC-1 Boost screw is specifically designed to enhance the acoustical performance of the RC-1 Boost isolator.

The RC-1 Boost is designed for use with any wood or steel application where noise control is required. This includes, wood framed or steel framed wall and ceiling systems. The RC-1 Boost product decouples Generic RC-1 channel from the framing, enhancing the acoustical performance of RC-1 channel's acoustical performance.

With an Acoustical design load rating of 18 lbs. per isolator, the RC-1 Boost clip can support up to two layers of 5/8" gypsum board when spaced no more than 16" x 24" oc. Final span of the RC-Boost isolators is determined by the UL Fire Resistive Design specifications.



RC-1 Boost specifications:	
Acoustical design load:	Up to 18 Lbs
Total deflection	2 mm
Double deflection	Yes (1 mm)
Low VOC	Yes
Adjustable	No
Cavity min	3/4"
Cavity Max	3/4"
Adjustment limit	N/A
Use on Ceilings	Yes
Use on walls	Yes
New Construction	Yes
Retro Fit	Yes
Assembled In USA	Yes

Wood
Apartment
Commercial
Conference Rooms

Condo
Recording Studio
Home Theater
Commercial theater

STEEL STUD WALL

Test #: NOAL 21-1026

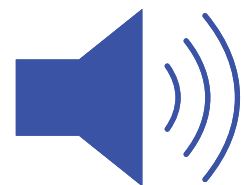
RC-1 Boost with ClarkDietrich RC-Deluxe



Coming Soon

UL File Number: R16638

Airborne Sound



STC 60

CONSTRUCTION: Steel Stud Wall

- 1 Layer 5/8" (16mm) Type X Gypsum Board
- 1 layer of Mute-X in between drywall
- 3-5/8" (92mm) 20ga Steel Studs @ 24" o.c. (610mm)
- 3-1/2" (89mm) Fiberglass Batt Insulation
- PAC RC-1 Boost @ 24" x 24" o.c. (610mm x 610mm)
- ClarkDietrich RC-Deluxe @ 24" o.c. (610mm)
- 2 Layers 5/8" (16mm) Type X Gypsum Board